



Hearsay



"Soar to Your Highest Potential Through Education and Community"

San Francisco Legal Professionals Association



PO Box 2582, San Francisco, CA 94126
www.SFLPA.org



In This Issue...

**What Have We
Been Up To?
Food Drive Report**

**Happy Holidays
from SFLPA!**

**Feature: A Working
Class Hero**

Happy Holidays, SFLPA!

By Judy Nakaso and Kate Cochran, Co-Editors

We hope you all are enjoying the holidays with your loved ones, whether you're cozy at home in front of the fire or traveling to see family and dear friends for the first time since the COVID-19 pandemic began.

SFLPA wishes you all a Happy Holidays, and no matter how you celebrate or who you celebrate with, remember we're always here for you. This season, as we reflect on all we have accomplished in another challenging year, we are grateful for our blessings and the silver linings--most are able to work remotely, with many expecting a hybrid schedule as some firms institute a partial return to the office in the beginning of the new year.

Look for more SFLPA events and opportunities to connect in the new year--check our Events Calendar on SFLPA's website regularly for updates!

San Francisco Legal Professionals Association 2021-2022 Elected Officers



Frances Skaggs, CCLS
President



Jenny Ha
Vice President



Lorri Nicolini, CCLS
Secretary



Sally Mendez
Treasurer



Christine Flores, CBA
Governor

Appointed Officers, Chairs & Committee Members

Executive Advisor: May Sene - executiveadvisor@sflpa.org

Parliamentarian: Christine Flores, CBA - governor@sflpa.org

Career Promotion and Scholarship: Felicia Masters - careerscholarship@sflpa.org

CCLS Program: Melissa Dallas, CCLS & Lorri Nicolini, CCLS - ccls@sflpa.org

Chapter Achievement: Christine Flores, CBA - governor@sflpa.org

Education: Frances Skaggs, CCLS Chair & Lillian Wong - education@sflpa.org

Hearsay Editors: Kate Cochran & Judy Nakaso, Co-Chairs - editor@sflpa.org

Interclub: Lillian Wong, Chair - interclub@sflpa.org

Legal Procedure: Leanne Ruesink, Chair - legalprocedure@sflpa.org

Membership: Jenny Ha, Chair - membership@sflpa.org

Professional Liaison/Day-in-Court: Lillian Wong, Chair - dayincourt@sflpa.org

Ways & Means: Lillian Wong, Chair & May Sene - waysandmeans@sflpa.org

Website: Kristen Craig-Reed, Chair - website@sflpa.org

Open Positions:

Programs, Social Media & Public Relations



TABLE OF CONTENTS

VOLUME 85 - ISSUE 7

DECEMBER 2021

Cover Article: Happy Holidays, SFLPA!	1
Elected, Appointed Officers and Committee Members for 2021-2022	2
Table of Contents	3
President's Message, Francie Skaggs, CCLS	4
Vice President's Message & Report, Jenny Ha	5-6
Governor's Report, Christine Flores, CBA	7-8
SFLPA Out and About Photos	10-12
LPI Membership	13
SFLPA: What Have We Been Up To?	14-15
SFLPA Coffee Hour	16
SFLPA Event Calendar	18
Happy Holidays from SFLPA!	19
CCLS Application	20
Legal Procedure: California Court Chatter	21-22
Feature: Working Class Hero by Ron Shingler.....	28-29
SFLPA Membership Information	30
LPI Benefits	32
Message from Hearsay Co-Editors	33
SFLPA Diversity, Equity + Inclusion Statement	34
LPI Code of Ethics	35





PRESIDENT'S MESSAGE

FRANCIE SKAGGS, CCLS



Dear Members:

It is the last month of 2021 and soon we will be ringing in 2022! Many law firms planned to start welcoming back legal staff to the office in January, but with a new variant of the Covid virus from South Africa, there may be some delay in plans.

SFLPA would like to connect with you, the members, to find out how your law firm is preparing and how you feel about coming back to the office. SFLPA wants to check in with our members to find out the current viewpoint of most of our members and how they feel about in-person events. We will be sending out a survey to get your feedback and thoughts about being around others. Please look out for the survey because your opinion is valuable to us and will help us plan future events that will be popular with our members.

Out of caution, we decided to hold the SFLPA Holiday Party virtually. Many people are still working remotely and we wanted to make sure that everyone feels safe before gathering again. However, to bring a little personal touch to the virtual world, the SFLPA elves sent out packages of goodies to everyone who RSVP'd. We have some fun games, a special holiday drink and surprises planned for this party!

It's nice to see that stores are gradually opening back up and people feeling safer to gather again. Many are still understandably cautious, but hopefully in December 2022, we will be back in downtown San Francisco enjoying the holiday excitement, whether it's the puppies and kittens in Macy's windows at Union Square, watching the ice skaters right across the street in the park, or the ones at the ice rink at Justin Herman Plaza with the Bay Bridge and its light show in the background, or the colorful Embarcadero Center full of vibrant poinsettias and bright lights, bustling with the enthusiastic energy of fascinated pedestrians promenading through the streets. Any view from Embarcadero Four can spark the holiday spirit. San Francisco is one of the most magical cities during this time of year.

In January 2022, we will start our monthly Brown Bags again. If there are any ideas or interest in a certain subject, please email education@sflpa.org and let us know so that we can do what we can to make it happen.

I hope everyone has a wonderful and warm holiday season, no matter whether you celebrate Hanukkah, Christmas, Kwanzaa, or Yule. For those who are having a hard time, please remember to keep hope alive, things will get better in 2022.



VICE PRESIDENT'S MESSAGE JENNY HA



Hello SFLPA,

It's hard to believe that 2021 is almost over, and 2022 is quickly approaching!

I'm sure that many of you are very busy at work, so best of luck to you until you can take your PTO or rest while your office is closed! To those of you looking for new work, fingers crossed for you to find something great soon!

Thank you so much for joining in on SFLPA events throughout this year. I hope to see you at our annual holiday for one last hurrah. As a gentle reminder, it will be on the evening of Tuesday, December 14! Please RSVP online at <https://www.sflpa.org/events-calendar/> if you haven't already done so.

I wish you a wonderful and restful holiday season with your loved ones.

Stay healthy and cozy and see you in '22!

Best regards,

Jenny Ha



FIRSTLEGAL

www.firstlegal.com | 415.626.3111

SENIOR ACCOUNT EXECUTIVE
SUE HAMMER
shammer@firstlegal.com
415.720.6229

Court & Process
Depositions
Discovery
Records
Digital
Investigations



COURT, DISCOVERY, RECORDS, DIGITAL, INVESTIGATIONS



VICE PRESIDENT'S REPORT JENNY HA



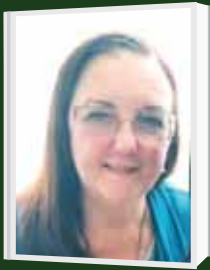
Membership Statistics

Below is our current membership composition, as of December 10, 2021:

Membership Class	Membership Type		
	Renewal	New	Total (per Membership Class)
Active	35	7	42
Associate	1	1	2
Student	0	0	0
Total (per Membership Type)	36	8	44 TOTAL annual members



Founded in 1969 Pathways Personnel uses its strong regional network of legal and corporate professionals built from our stable and continuous presence in the bay area employment industry for over 50 years to find the highest quality candidates for our clients. All Pathways recruiters are legal and corporate industry veterans. Our experience lets us better understand the challenges that our clients and candidates face working in and running a law firm or corporate legal department.



GOVERNOR'S REPORT

CHRIS FLORES, CBA



The Second Quarterly Conference of Legal Professionals, Incorporated was held November 19 through 21, 2021 at the Town & Country Resort in San Diego, California. The Conference was co-hosted by Legal Professionals, Incorporated and San Diego LSA. The conference was well-attended, and appropriate health protocols were in place for attendees. We continued our "Passport to Education" Transatlantic Journey to the United Kingdom.

It was my privilege to represent SFLPA as Governor. President Francie Skaggs, CCLS attended as a member of the Webinar team. Larry McGrew attended as Legal Procedure Chair and member of the Marketing Committee. Lorri Nicolini, CCLS also attended.

The weekend adventure started with Francie, Lorri and I traveling to San Diego together on Friday, November 19. After getting settled into our rooms, we were able to reconnect with friends and colleagues, and Francie attended a meeting with her team. The festivities got underway with the Friday Night Welcome Reception. The theme for the evening was a "Dickens Holiday." Many of our colleagues were dressed in period costume. SFLPA gave its nod to the UK by wearing Union Jack face masks.

The Governors met for an informal discussion of items that were scheduled to be discussed at the Board of Governors meeting on Saturday. The majority of the discussion focused on the change to the Eula Mae Jett Scholarship eligibility, and the concern about declining membership. There was some discussion about efforts to return to in-person events.

On Saturday morning, LPI President Lynne Prescott, CCLS called the meeting to order at 9:00 a.m. Paul Evans, husband of San Diego LSA member Renee Evans, CCLS and a veteran of the U.S. Marine Corps, led the Pledge of Allegiance. The Code of Ethics was read by Executive Advisor Heather Edwards. President Lynne called for a moment of silence in remembrance of members who had passed away or had difficulties in recent months. She then introduced the Past Presidents in attendance and announced that Honorary Member Don Lee was not at this conference as he was celebrating his birthday.



GOVERNOR'S REPORT CONT'D.



Roll was called and there were 20 Governors present, constituting a quorum. The minutes of the August Board of Governors Meeting were approved as distributed. The meeting continued with the reports of the elected and appointed officers. A recess was taken for the Legal Specialization Seminars and the scheduled luncheons. The afternoon session of the Board of Governors meeting continued with a review of the Executive Committee Resume and the recommendations of the Executive Committee.


The Governors adopted the recommendation of the Executive Committee that LPI enter into a one-year contract with June Hunter to serve as LPI's legal technology trainer. The Governors also approved an amendment to the LPI bylaws which will allow the Educational Program Coordinator to enter into contracts on behalf of LPI in order to conduct educational programs. It is expected that LPI will be able provide additional educational opportunities to the members of LPI. In addition, several bylaw amendments were adopted which will allow active members, student members and associate members of LPI to apply for the Eula Mae Jett Scholarship.

The conference weekend continued with the Saturday Evening Banquet. Attendees were encouraged to dress in their finest attire, fit for audience with Queen Elizabeth herself! Lorri, Francie and I were decked out – complete with tiaras!

The conference weekend concluded with the Sunday morning brunch. There was no business to be considered at this meeting, which gave a little more opportunity to socialize with many we haven't seen for a while.

For details regarding the activities of LPI, please consider reviewing the reports of the Officers and Chairs which can be found on the LPI website, or by requesting a copy from me.

The Board of Governors meeting was adjourned until the Third Quarterly Conference Board of Governors Meeting, which will be held February 25 – 27, 2022 at the Stockton Hilton. It will be co-hosted by LPI and Stockton-San Joaquin LPA. Stockton is an easy drive from the Bay Area, so I would encourage everyone to consider attending, even if only for the meeting and perhaps the banquet on Saturday.



CAROL FOSTER CONSULTING
DIRECT HIRE • TEMP TO DIRECT HIRE • TEMPORARY

CAROL FOSTER CONSULTING

(415) 640-2607

CAROL@CAROLFOSTERCONSULTING.COM
WWW.CAROLFOSTERCONSULTING.COM



**Focus on Getting the Testimony You Need
at Your Next Remote Deposition**

with

BARKLEY
Court Reporters

REMOTE EXHIBIT MANAGER SERVICES

Let Barkley's expert Remote Exhibit Technicians empower you to:

- ✓ Introduce exhibits dynamically in response to testimony
- ✓ Zoom in and highlight key exhibit information
- ✓ Examine spreadsheets and columns of data more closely
- ✓ Record the deponent's exhibit annotations

CALL (800) 222-1231

Barkley.com

SFLPA Out and About Photos



Secretary Lorri Nicolini, Cori Lucas, Roberta Madej and Susan Diane Brown tap dancing.



LPI Webinar Chair Renee Evans' mother, Sharon, with security at LPI Conference.

SFLPA Out and About Cont'd.



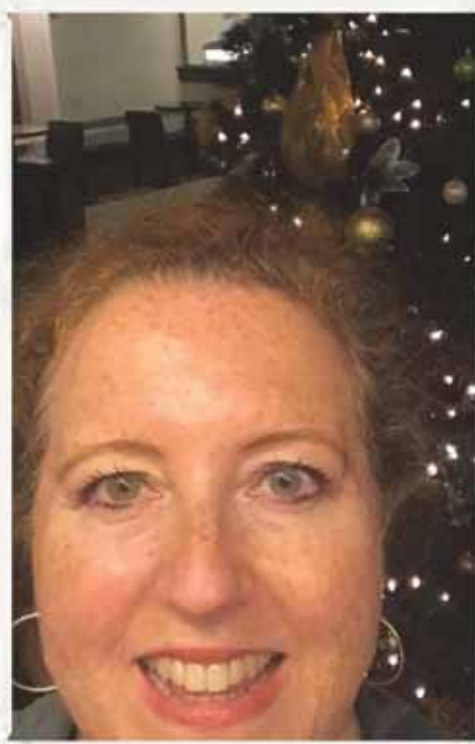
President Francie Skaggs and Ways & Means Chair Lillian Wong.



Treasurer Sally Mendez shows that holiday spirit!



LPI Legal Procedure Chair Larry McGrew does his best Rudolph impression.



Secretary Lorri Nicolini with her beautiful tree.

SFLPA Out and About Cont'd.



LPI Legal Procedure Chair Larry McGrew and Governor Chris Flores at LPI Conference.



Co-Editor Kate Cochran with Eric and Izzy Cervantes.



Rae Perez's snappy holiday sweater.



Chase Center's Warriors-themed nutcracker.



MEMBERSHIP

Established in 1934, Legal Professionals Inc., also known as "LPI," is a nonprofit, mutual benefit corporation organized for the purposes of providing educational, professional, and personal development programs to its members.

Membership is open to anyone within the legal profession. In addition to legal support professionals, the membership includes court clerks, court reporters, paralegals, legal assistants, legal administrators, banking/trust department personnel, legal support vendors, and attorneys.

Local associations, located throughout the state, offer monthly educational and professional programs. Many sponsor lunchtime learning, evening, and weekend long-term educational workshops.

Advantages of LPI Membership:

- Continuing education and professional development
- Local association educational meetings
- Networking with other legal professionals
- *The Legal Secretary* magazine (published quarterly)
- Benefits available to members on an individual basis:
 - Discounts on LPI's Rutter Group publications
 - Financial consulting
 - Disability income plan
 - Long-term care plan
 - Medical plan
 - Credit union memberships
 - Rental car discounts

LPI Conferences:

Conferences are held May, August, November, and February at various locations throughout California. Continuing educational seminars and workshops are offered at each conference, conducted by respected attorneys, judges, and educators. Updated materials are provided for each workshop.

Membership-At-Large:

There are over thirty associations within the State of California. Legal professionals may join LPI as a Member-at-Large if a local association is not within a reasonable distance. Members-at-Large are eligible for all of the benefits of membership, but joining LPI through a local association provides instant access to the benefits of the local association as well as LPI.

LPI Publications:

Legal Professional's Handbook – This best-selling, two-volume publication sets out procedures and forms in most areas of law in a clear, concise manner.

Law Office Procedures Manual – This publication, an excellent training tool, contains completed Judicial Council forms, procedural guidelines and a glossary formulated for legal procedure.

Legal Secretary's Reference Guide – The essential, handy desk reference guide for busy legal professionals.

The Legal Secretary – This quarterly magazine, published by LPI and distributed to all members, contains educational and professional development articles from LPI officers, chairmen, members, and guests.

LPI Programs:

California Certified Legal Secretary – Become more valuable in your office, maintain and increase your skills, gain more confidence, earn more respect, and achieve greater financial security by achieving certification through the CCLS program. Online study courses are offered.

Legal Specialization Sections – Further your legal education by joining one or all of the Legal Specialization Sections: Civil Litigation, Criminal/Family Law, Law Office Administration, Probate/Estate Planning, Federal Law, and Specialty Law. Classes are offered free to members at each LPI conference, as well as online. Members receive a statewide roster of counterparts and quarterly newsletters.

Legal Secretary Training – Online classes are offered, including Beginning Legal Secretary and Advanced Discovery. Classes are work-at-your-own-pace, and are designed for legal staff at all levels.

For more information about membership or an association near you, contact LPI's Corporate Office: Kim Oreno, kim@legalprofessionalsinc.org; www.legalprofessionalsinc.org. Find us on Facebook, Instagram, LinkedIn & Twitter!

Take a step in the right direction. Advance your legal career, improve your professional and personal skills.
BECOME A MEMBER OF LPI TODAY.

What have we been up to?



Legal Procedure Chair Leanne Ruesink and Neil Zarchin, Food Drive Administrator.



Recent Events

Contra Costa Food Bank Drive

By Leanne Ruesink, Legal Procedure Chair

This year's neighborhood food bank drive at Magee Ranch was a success in so many ways. The sleigh went up, collection bins were delivered, and the first shift to collect donations started at 7:00 AM, with shifts running through 5:00 PM. As I do every year, I stand on the corner waving to passersby and ringing my bells, in hopes to get their attention and encourage them to drop off a few cans or give a monetary donation. All day long, folks stopped by to donate food and money. They took a moment to introduce themselves and offer kind words of gratitude. We came together as neighbors, and became friends, instead of just an address.

It is very easy to be a part of a simple solution for our community's less fortunate. In one day, our group collected 1,912 pounds of food which equate to approximately 1,593 meals. We also collected \$2,640 in monetary donations which provide 5,280 meals. The simple act of giving a few cans or nonperishable food items makes a huge difference for those who need our help.



What have we been up to?

SFLPA Events are Fun! (cont'd.)

With multiple neighborhood food drives each year, the Contra Costa County Food Bank can supply roughly 1,000,000 pounds of food! This food supports 300 agencies such as food pantries, shelters, and soup kitchens. The Contra Costa County Food Bank also has nine direct distribution programs where they give food directly to the public.

This experience offers more than just a “feel good” moment for us, the volunteers. We are truly humbled and recognize how fortunate we are and blessed to help those who aren’t. We get to witness a community come together for an essential need and provide opportunity for involvement for both adults and youth, which serves as a reminder that we are called to think beyond ourselves and consider the world around us. So, take a moment to be grateful for what you have, consider those who have less, and drop a can or two in your local food bank bin! Jingle! Jingle! Jingle!



SFLPA Coffee Hour



Come to our virtual Zoom café
to decompress, mingle, and/or
work on a personal project

**SEE YOU IN
JANUARY!**



RSVP to vicepresident@sflpa.org
for the Zoom link.



THE APTUS DIFFERENCE



“ We want to mimic the in-person process as much as possible in remote depositions. With our complimentary trainings, we feel we put our clients in the best position to succeed! ”

SERVICES



- Realtime Reporting



- Remote Depositions



- Text and Video
Streaming



- Picture-in-Picture (PIP)
Technology



- Trial Presentation Support



- Interpreting



- Nationwide and International
Coverage



- Online Case Management



SAN FRANCISCO

www.apтусCR.com | 415.300.0469 | Scheduling@apтусCR.com



Educational & Networking Opportunities

December

12/14 - SFLPA Holiday Party
12/15 - SCCLPA Holiday Party
12/15 - Placer County LPA Christmas Party
12/16 - CEC Webinar Lit. Support Providers

12/16 - Sacramento LSA Mock Trial
12/21 - Winter Solstice
12/25 - Christmas Day
12/26 - Kwanzaa Begins

January

1/1 - New Year's Day
1/4 - SFLPA Board Meeting

1/17 - Martin Luther King, Jr. Day
1/18 - SFLPA General Membership Meeting

February

2/1 - SFLPA Board Meeting
2/5 - SCCLPA Annual Crab Feed

2/14 - Valentine's Day
2/21 - President's Day

All SFLPA events are posted on our website. You will also find some of the flyers published in this issue. Please visit us at www.sflpa.org and click on the Events tab.

We also encourage you to visit LPI's website at www.legalprofessionalsinc.org to keep up with all the educational webinars, other local association events, and information on upcoming LPI Conferences.



Happy Holidays From SFLPA!

*Whether you say Merry Christmas
Or wish all a Blessed Yule,
Greet friends with Chag Sameach
Or the Kwanza kinara rules,
We welcome one and all
To share the holidays today,
And make special memories
With your friends at SFLPA!*





California Certified Legal
Secretary
A Program of LPI®



APPLICATION TO TAKE CCLS® EXAM

Mail Application, copy of LPI Membership Card (if applicable), and fees to:
Vivian L. Shreve, CCLS, c/o WSGR, 650 Page Mill Road, Palo Alto, CA 94304

- (Select one) (Select one)
- | | | |
|--|---|---|
| <input type="checkbox"/> Northern California | <input type="checkbox"/> Saturday, March 20, 2021 | <input type="checkbox"/> Saturday, September 18, 2021 |
| <input type="checkbox"/> Southern California | <input type="checkbox"/> Saturday, March 20, 2021 | <input type="checkbox"/> Saturday, September 18, 2021 |

- **Deadline:** Applications must be received 60 days prior to the examination date.
- **Late Application:** Late Fees apply when Applications are received less than 60 days (but not less than 30 days) prior to the examination date, and accepted only if space is available.
- **Deferral:** Requests to defer to the next exam must be received at least 30 days prior to the exam date.

EXAMINATION FEES (Select Payment Type)		Check <input type="checkbox"/>	PayPal <input type="checkbox"/>
		Payable to "LPI" Mail to above address	Email exam application to CCLSCertifyingBoard@gmail.com . Payment link will be provided upon confirmation of eligibility to sit for exam.
LPI Members <input type="checkbox"/>		Non-LPI Members <input type="checkbox"/>	
On Time Registration Fee	\$ 25.00	On Time Registration Fee	\$ 75.00
Examination Fee*	100.00	Examination Fee*	100.00
Late Fee (if applicable)	45.00	Late Fee (if applicable)	45.00
TOTAL DUE w/o Late Fee:	\$125.00	TOTAL DUE w/o Late Fee:	\$175.00

Personal Information

Name: _____	
Mailing Address: _____	
Last 4 digits of SSN: _____	Email: _____
Phone (Day): _____	Phone (Evening): _____
LPI Member: <input type="checkbox"/> Yes (enclose copy of LPI Membership Card) <input type="checkbox"/> No	
Name of Local LPI Association: _____	

Employment Information

Provide your legal secretarial employment information beginning with your most recent (or current) employment in order to confirm that you have at least two years' experience. Attach a supplemental page if you have not been in your current position for two years.

Position: _____	Dates of Employment: _____
Employer: _____ (name and address)	
Supervisor: _____	Supervisor's Phone: _____
	Supervisor's Email: _____
Summary of Duties: _____	

I certify that I have completed this application truthfully. I understand that a false statement may result in the rejection of this application or revocation of my certification. I understand and agree that the contents of the examination are confidential and not to be discussed with anyone, and that my employment record will be verified by a member of the California Certified Legal Secretary Certifying Board.

Date: _____

Applicant Signature _____

*Fees subject to change without notice.

Rev: April 2020



Legal Procedure



California Court Chatter

About California Courts

Overview

California's court system is the largest in the nation and serves a population of more than 39.5 million people— about 12 percent of the total U.S. population.

The vast majority of cases in the California courts begin in one of the 58 superior, or trial, courts, which reside in each of the state's 58 counties. With approximately 500 court buildings throughout the state, these courts hear both civil and criminal cases as well as family, probate, mental health, juvenile, and traffic cases.

The next level of judicial authority resides with the Courts of Appeal. Most cases before the Courts of Appeal involve the review of a superior court decision being contested by a party to the case. The Legislature divided the state geographically into six appellate districts.

The state Supreme Court serves as the highest court in the state and has discretion to review decisions of the Courts of Appeal in order to settle important questions of law and to resolve conflicts among the Courts of Appeal. The court also must review the appeal in any case in which a trial court has imposed a judgment of death.

California Courts at a Glance

- Court levels: 3
- Trial courts: 58—one in each county
- Court of Appeal districts: 6
- Highest court: California Supreme Court
- Judicial branch budget is 1.5% of State General Fund

Jury Service

- Jury pay: \$15/day starting with second day of service and 34 cents per mile one way
- Approximately 9 million jurors were summoned for jury service
- Approximately 4 million were qualified and available to serve
- Approximately 138,000 were sworn in as jurors



Legal Procedure



Court Chatter Cont'd.

Language Access

- Languages and dialects spoken in California—more than 200
- Percentage of Californians that speak a non-English language at home: 44%
- Percentage of Californians with English-language limitations: approximately 19% (more than 7 million)
- Languages certified for court interpreters: American Sign Language and 15 spoken languages—Arabic, Eastern Armenian, Western Armenian, Cantonese, Farsi, Japanese, Khmer, Korean, Mandarin, Portuguese, Punjabi, Russian, Spanish, Tagalog, and Vietnamese
- Percentage of interpreter services in Spanish in courtroom proceedings: 91%

To learn more about California courts, visit: <https://www.courts.ca.gov/2113.htm>.

SFLPA Legal Procedure Chair
LEANNE RUESINK
legalprocedure@sflpa.org
415.707.9221

eFile with the Industry's Best

First Legal launched the industry's first Concierge eFiling program in 2002. Over the last two decades, we have stayed ahead of the competition by focusing on technology and customer service. Our systems are designed with our clients' needs in mind.

	Direct eFiling	Concierge eFiling	Single Sign-On for All Courts	User Friendly Portal	Live Chat Support	Telephone Support until Midnight	World Class Customer Service	Detailed Invoice Per Assignment	Dedicated Support Contact*	Flexible Payment Options
FIRST LEGAL	\$8.75	\$32.00	✓	✓	✓	✓	✓	✓	✓	✓
COMPETITOR	\$12.00	✗	✓	✓	✓	✗	✗	✗	✗	✗

*Available to high volume clients

ADVANTAGES OF USING FIRST LEGAL'S CONCIERGE EFILING SERVICE:

- 10% lower rejection rate than Direct eFiling
- Expert staff available until midnight, Mon - Fri
- Knowledge of local eFiling guidelines in each jurisdiction
- Manual review of documents to ensure they meet eFiling requirements
- Free up time to focus on tasks more critical to your business
- No more following up with the court to resolve issues

Time is your most valuable resource. Why waste it dealing with the meticulous filing requirements and correcting court rejections?

If you haven't used First Legal recently, you owe it to yourself to give us a try.

Our knowledgeable and friendly staff is available 24/7/365.
Contact us today to find out more!

800.889.0111
www.firstlegal.com

SANTA CLARA COUNTY LEGAL PROFESSIONALS ASSOCIATION

Invites you to its 11th Annual

SILENT
AUCTION

DANCING

CRAB FEED



LIVE
DJ

Saturday
February 5, 2022
Social Hour: 5:30 pm
Crab Feast:
6:00 pm-8:30 pm

**QUINLAN
COMMUNITY CENTER**
10185 N. Stelling Rd.
Cupertino, CA 95014

\$75 Adults
\$40 Children (4-12)
Price includes:
Beer and Wine (21 and over)
Soda and Water

Fresh Cooked Dungeness Crab!
Includes Salad, Garlic Bread, Pasta, and Dessert!



For more information, contact Rod Cardinale, Jr:
Order tickets online at Eventbrite:
or on the SCCoLPA website:

sccolpa.crabfeed@gmail.com
http://sccolpa_crabfeed.eventbrite.com
<http://www.sccolpa.org/Events>



A portion of the proceeds to benefit our local community projects

LIVE!

FREE EVENT

**IN-
PERSON**

SLSA presents, **live and in-person**, its annual
HOLIDAY MOCK TRIAL



**"Grandma v. Santa Claus
A Drunken Disorder"**

Written by John Baldwin



When:

Thursday, December 16, 2021, at 6:00 p.m.

Location:

**Downey Brand LLP
621 Capitol Mall, 18th Floor, Sacramento, CA**

**Register online at:
www.slsa.org/events**

**Food provided by:
Beach Hut Deli**

Limited validated parking available at two locations: **500 Capitol Mall** and **621 Capitol Mall**.
To reserve parking, email Registration Chair, Christie Kaelber, at ckaelber@diepenbrock.com

ACTORS NEEDED:

No memorization of lines required – just read from the script!

Bailiff

Plaintiff's Attorney

Court Clerk

Patsy Earlene McCoy, 8 yrs. old

Imogene McCoy aka Grandma

Vixen Reindeer

Judge

Defense Attorney

Officer

Dr. Hunka-Hunka Burninglove

Kris Kringle aka Santa Claus

Rudolph Reindeer

Jurors (at least 5)

To volunteer for a part, contact Marci Frazier at marcifrazier1@gmail.com

REGISTER TODAY! Registration closes on Tuesday, December 14, 2021



The Mock Trial is an educational event.
MCLE & CCIS Credit: SLSA is a local association of
Legal Secretaries, Incorporated, an approved
provider, and certifies that this activity has been
approved for minimum continuing legal education
credit in the amount of 0.50 hours by the State
Bar of California.

Santa Clara County
Legal Professionals Association
www.sccolpa.org



2021 HOLIDAY PARTY

What better time of year to gather together in person than during the holidays!
Join us for a fun-filled, festive evening! Bring a wrapped gift not to exceed \$20 if you would like to participate in our annual gift exchange!

We will also be announcing SCColPA's Boss of the Year
and the winner of the 2021 Membership Drive to a deserving member

In the spirit of the holiday season, SCColPA will be presenting its annual
holiday donations to two special local community organizations



Ugly Sweater
Contest



Special Appearance by
Santa & Mrs. Claus



Cookie
Exchange

Wednesday, December 15, 2021

Social: 6:00 p.m. Dinner: 6:30 p.m.

Reservations & Dinner (\$35.00)

FLAMES Eatery & Bar
88 S. First Street, San Jose, CA 95113
(Validated parking at the adjoining 4th Street Garage)

Register and pay by credit card on our "Upcoming Events" page at www.sccolpa.org/events.

(a \$3 convenience fee is added for credit card payments)

Email reservations@sccolpa.org with any questions.

NO REFUNDS if reservation is canceled within 24 hours of the event.



For legal professionals who have critical and often immediate needs for expert, local and national court reporting, legal videography and record retrieval services, Lexitas is a strategic litigation support partner that furnishes our clients with best-of-breed services, inspires confidence, provides convenience, and delivers value.

CALIFORNIA SERVICES

- Expert Court Reporting
- Specialized Plaintiff, Defense, and Workers' Compensation Records Retrieval
- Realtime Reporting Services
- Internet Depositions
- Legal Video Services
- Electronic Transcripts
- Process Serving
- Digitization of Files

LOCAL OFFICE

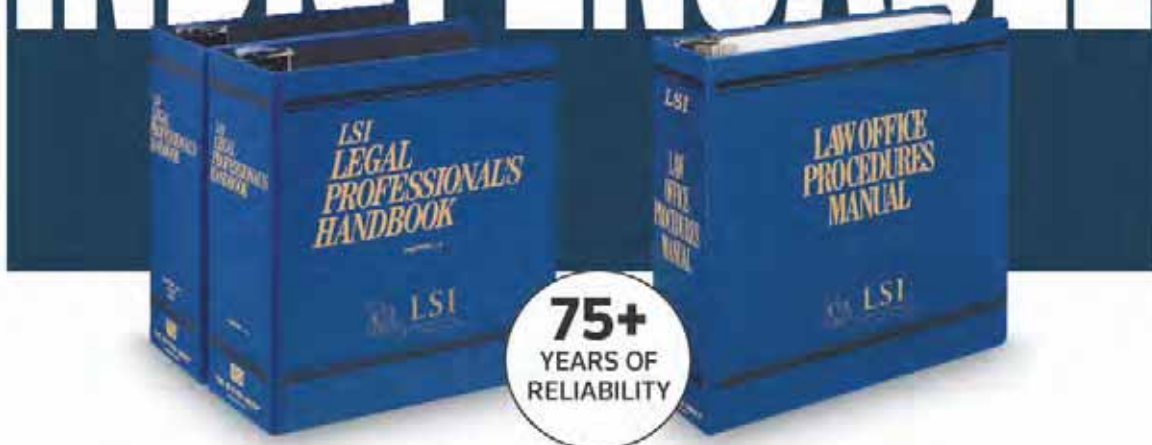
2550 Warren Drive
Rocklin, CA 95677

Records | 800-497-7618
Reporting | 888-893-3767
www.lexitaslegal.com

The Letter of the Law. The Spirit of Service.



INDISPENSABLE



LEGAL PROFESSIONAL'S HANDBOOK

...THE ULTIMATE RESOURCE GUIDE!

Busy lawyers rely on their staff to handle many details of their practice. They look to you, as a professional, to know what to do, and when and how to do it. The *Legal Professional's Handbook* provides you with the answers ...just as it has for over 75 years! Each chapter contains detailed practice forms and step-by-step instructions covering every major area of California law practice. The Handbook is an invaluable resource to add to your entire reference library!

LPI MEMBERS-ONLY PRICE\$347.20
Nonmembers Price.....\$496

Price includes shipping. Add applicable sales tax.
This title is updated annually for subscribers
by replacement pages.

LAW OFFICE PROCEDURES MANUAL

...THE IDEAL TRAINING MANUAL FOR NEW STAFF!

This Manual contains detailed practice forms for every major area of law practice, along with step-by-step instructions for completing them. This is a "must-have" forms guide for legal professionals, paralegals and new lawyers; and it's a great resource for training your office staff. In fact, the Manual is frequently used in schools, workshops and legal classes. You'll also find handy miscellaneous aids, such as procedural checklists and guidelines, tips on transcription and proofreading, law office abbreviations and legal terminology, and a list of useful reference books.

LPI Members-Only Price.....\$191.10
Nonmembers Price.....\$273

Price includes shipping. Add applicable sales tax.
This title is updated bi-annually for subscribers
by replacement pages.

Buy both LPI books together and get a discount!
Combo price for both books.....\$538.30
Price includes shipping. Add applicable sales tax.

COMPILED BY

LEGAL PROFESSIONALS INCORPORATED

PUBLISHED BY

TRG THE RUTTER GROUP

40541696



THOMSON REUTERS®

TO ORDER OR FOR MORE INFO, CALL
(800) 747-3161 (EXT. 2)
www.RutterGroup.comTM



A Working Class Hero Ronald J. Shingler



Mr. Foster: A Working Class Hero

The Giants and I arrived in San Francisco in 1958. Juan Marichal, Willie McCovey, and Jesus Alou were our guys. Willie Mays was our hero. When I played sandlot ball, I always imagined myself to be Willie Mays. It was my boyhood dream to see him play. Unfortunately, my parents never took me out to the ball game. Fortunately, Mr. Foster did.

Willard Foster worked the line at the Continental Can Company in Pittsburg. It was the type of work that could bend the body and dull the mind, but it was important work because it supported his family. He was a hard-working man and also a man of God. In ways unspoken, he was a role model. I was one of five students – all boys – in his fourth grade Sunday School class. To improve our attendance, Mr. Foster made a deal with us: if we attended Sunday school five weeks in a row, he would take us to a Giants game. Oh my gosh!

I made it to three classes in a row. On the fourth Sunday, however, my parents decided to take our family away for the weekend. I reminded my parents that I could not go to the Giants game if I miss one class. Despite my anguished pleas, I spent that weekend in the mountains.

On the fifth Sunday, I returned to Sunday school. Fighting back my tears, I told Mr. Foster that I was sorry, and I told my friends to have fun at the game. As I started to leave, Mr. Foster said, "Hold on, Ronnie. You did your best, and that's all that matters. You are going to the game." It was a simple act of kindness that I appreciate to this day.

On Sunday, April 14, 1968, Mr. Foster took us to Candlestick Park to see the Giants play a double-header against the Philadelphia Phillies. He purchased our tickets, hot dogs, and sodas. We sat in the upper deck, and then the magic happened: Willie Mays charged onto the field, Willie McCovey went to first,



A Working Class Hero (cont'd.)



and Juan Marichal took the mound. I cheered with unrestrained joy!

Marichal pitched nine innings in game one, struck out nine batters, and allowed just two runs. His ERA was 3.18. Willie Mays went to the plate five times. He scored two runs, drove in four RBIs, and hit a homerun! The Giants won 13 to 2.

In game two, Ray Sadecki pitched nine innings as well. He struck out ten batters, and his ERA was 1.0. Willie Mays sat out most of the second game. In his place, a young ballplayer named Frank Robinson played centerfield. The Giants won 3 to 1. (1)

It was a glorious day! I will forever be grateful to the working-class hero who took us to see the greatest ballplayer of all time.

(1) Source: baseball-reference.com. I was only 10 that day. I clearly remember watching Willie Mays hit a homerun, but the other details described here are beyond my memory.

Ron Shingler is the founder of Shingler Law, a firm in Walnut Creek comprised of seven professionals who represent people suffering from mesothelioma. Mr. Shingler is the son of an asbestos plant worker. He can be reached at ronshingler@shinglerlaw.com





Become a Member



San Francisco Legal Professionals is a mutual benefit corporation formed for the primary purpose to provide its members with educational, networking, and personal development opportunities through a range of services. We have three different membership categories:

Active Membership

- You are currently employed by or have at least one-year experience, including temporary or freelance work, with a law firm, the legal department of a private company or government entity, a courthouse or other company that is legally entitled to provide legal advice and counseling to the public; employed by any business which provides legal support services
- Have attended at least one SFLPA function.
- Submit with your application dues in the amount of \$65.00 for the first fiscal year of membership. \$55.00 for renewal.

Associate Membership

- You are a student enrolled in a legal trade school or currently attend college and are enrolled in legal classes; are temporarily unemployed in the legal profession, or are actively seeking employment in the legal field.
- Have attended at least one SFLPA function.
- Submit with your application dues in the amount of \$55.00 per fiscal year. \$45.00 for renewal.
- Student Membership

Membership Renewals

- If you are a current member and wish to renew your membership, you may renew online or download a form to mail your renewal.

If you are interested and would like to learn more about the services provided within the SFLPA, please visit our website at: www.sflpa.org. To apply for membership, click on the Membership Tab and fill out our online application form. Payments can be made via credit card online.

Our application forms are also available to download. Applications and payments can be received by mail. Address information as well as who to make checks payable to are also provided on the forms.

If you have questions and would like to speak to someone, please send an email to our Vice President/Membership Chair: Jenny Ha. Send your email to: membership@sflpa.org.



Change of Address

Member Name _____

New Address _____ City _____ State _____ Zip _____

New Home Telephone

New Office Telephone

New Personal Email Address

New Work E-Mail Address

New Employer Name

New Address _____ City _____ State _____ Zip _____

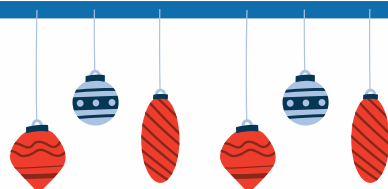
Please indicate preferred contact method: ☐ Home ☐ Work

YOUR SPECIALTY:

- ☐ Administrative
- ☐ Appeal
- ☐ Arbitration
- ☐ Business/Corporate
- ☐ Probate/Estate
- ☐ Taxation

- ☐ Criminal
- ☐ Family
- ☐ Law Office Management
- ☐ Litigation
- ☐ Real Estate
- ☐ Other (Specify):

Please submit to:
SFLPA
P.O. Box 2582
San Francisco, CA 94126-2582



LEGAL PROFESSIONALS INCORPORATED (LPI) - BENEFITS

Note: This list is maintained for use by members of Legal Professionals, Inc. Agents for insurance and financial providers are available as resources when members inquire about benefits. Please use this as a starting point; ask for information, compare policy coverage and prices. For information, call these representatives directly. For questions and concerns regarding Member Benefits, please contact the LPI Vice President at vicepresident@legalprofessionalsinc.org.

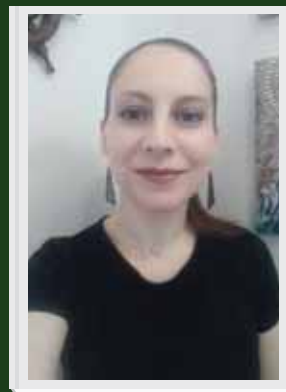
<p>LEGALSHIELD/IDSHIELD Contact: Courtney Coats, Independent Associate (925) 580-6446; coats@legalshieldassociate.com LegalShield offers legal, identity theft protection, along with a massive Perks Program with significant savings to over 500 local and national companies.</p>	<p>EMPLOYEE AND MEMBER DISCOUNTS https://www.employeeandmemberdiscounts.com/employee-discounts-and-offers/legal-secretaries-incorporated/ Discounts on auto and car, entertainment, financial, health and medical, home services, insurance and warranty services, travel and vacation, pet care, and other unique offers.</p>
<p>WORKING ADVANTAGE Toll Free: (800) 565-3712 www.workingadvantage.com Discounts on events, movies, theme parks, live theater, sporting events, ski tickets, hotels, family events, gift cards and more. Member ID: Contact LSI Corporate Office at info@lsi.org, or LSI Vice President.</p>	<p>PROVIDENT CREDIT UNION 303 Twin Dolphin Drive P.O. Box 8007 Redwood City, CA 94603-0907 (800) 632-4699 - (650) 508-0300 www.providentcu.org All LSI members are eligible to join.</p>
<p>HERTZ CORPORATION Effective Date: June 1, 1996 CDP Card #447698 (800) 654-3131 www.hertz.com</p>	<p>LA FINANCIAL FEDERAL CREDIT UNION P.O. Box 6015 Pasadena, CA 91102-6015 (800) 894-1200 www.lafinancial.org Open to anyone working or living in L.A. County, or referrals from existing member.</p>
<p>LEGACY WEALTH MANAGEMENT Daniel R. Henderson, MBA, CFP 3478 Buskirk Avenue, Suite 300 Pleasant Hill, CA 94523 Office: (925) 296-2853 or (877) 679-9784 Fax: (925) 944-5675 E-mail: daniel@legacywealthmanagement.biz www.legacywealthmanagement.biz Discounted John Hancock Long Term Care/Life Insurance, Annuities, Retirement, Investment & Estate Planning, Mutual Funds, & 401K</p>	<p>CAPITAL INVESTMENT ADVISERS Emerson J. Fersch, CFP, ChFC, CLU, CASL 5000 E. Spring Street, Suite 200 Long Beach, CA 90815 Office: (562) 420-9009 or (877) 270-9342 Fax: (562) 420-9955 www.ciadvisers.com Retirement Planning/Investment Management, Pension and 401K Rollover Consulting, Comprehensive Financial Planning.</p>
<p>DAVID WHITE & ASSOCIATES Wealth Accumulation and Preservation 3150 Crow Canyon Place, Suite 2000 San Ramon, CA 94583 (800) 548-2671 Contact: Ryan Gonzales (ext. 2682), rgonzales@dwassociates.com, or Matt Kay (ext. 2628), mikay@dwassociates.com Investments, Retirement Plans, Education Savings Accounts, Medical/Life/Disability/Long Term Care Insurance</p>	<p>ATHLETES BUSINESS CONSULTANTS Jory Wolf, President/Founder 350 10TH Avenue, Suite 1000 San Diego, CA 92101 Office: (858) 886-9842 Cell: (510) 919-9062 jory@athletesbiz.com California Insurance License: 0E88330 Discount on Long Term Care/Life/ Disability Insurance, commercial and residential lending.</p>

Revised 04/2020



Message From Co-Editors

**Judy Nakaso &
Kate Cochran**



Winter is one of my favorite seasons. The temperatures are dropping and I can open my winter box and enjoy a new wardrobe of browns, greens, coral and mustard yellow in heavier and knitted materials. I can blend in with the piles of leaves that carpet the sidewalks and see them fly into the wind. The coolness wakes me up and I see the landscape more vividly with scattered showers watering the plants and bulbs below the ground in preparation for Spring's floral explosion. The transformation from drought into verdant lawns is lush and rich. As we cover our bodies with warm clothing from head to toe, we give silent thanks that we are not homeless and living on the streets. We are fortunate in being able to work from home, remotely getting business done with technology, and safe from the invisible biological bugs that we wish were living far away in the cloud.

What does December mean to you? To some people this month marks the end of a cycle beginning with January New Year's resolutions; or your original goal was achieved or changed and it's a time to re-group and design a new direction to head toward. Finishing a project or a time period also may offer an opportunity to reflect on one's accomplishments and challenges for the past 12 months. Was your glass half-full or half-empty? How do we flip the switch and turn our trajectory from downward to upward so we can SOAR higher than before? Learning what we do not want can give us valuable information to lead us onto the right path of where we do wish to go.

The year is not over yet. There is still a window of time to recalibrate and use your booster rockets to finish even ahead of your target. Remember, we are stronger together, so please keep your eyes open and reach out for support if you are stuck, or offer support to others where your expertise might be the golden key to someone's success.

We are TEAM SFLPA and we have powerful synergy when we succeed together.



San Francisco Legal Professionals Association

🌟 Diversity, Equity + Inclusion Statement 🌟

Members of the San Francisco Legal Professionals Association shall respect everyone, and shall not discriminate against anyone on the basis of that person's actual or perceived race, ethnicity, age, gender, religion, sexual orientation, gender identity, gender expression, disability, body size, educational background, nationality, immigration status, economic status and/or other diverse backgrounds.

Members shall contribute to a safe, professional, and collegial environment in SFLPA and LPI. This includes all SFLPA and LPI events, and all situations in which a member interacts or communicates with another member, regardless of whether the interaction occurs at or outside SFLPA or LPI events.

Members understand that people may belong to different communities and backgrounds of which the member is not aware. Members will be mindful of their potential biases, and respectful as they interact with others.

Members understand that disclosure of a person's diverse background can lead to unintended negative consequences. Therefore, members shall exercise utmost discretion in respecting others' privacy when diversity-related information is disclosed to or obtained by a member.

Members are encouraged to examine and take advantage of the privileges they have to support others within our association, their own communities, and beyond.



LPI Code of Ethics

Members of LPI adhere to the LPI Code of Ethics which is dedicated to an LPI Past President, Joan M. Moore, PLS, CCLS, and reads as follows:

It shall be the duty of each member of Legal Professionals, Incorporated, to observe all laws, rules, and regulations now or hereafter in effect relating to confidentiality and privileged communication, acting with loyalty, integrity, competence and diplomacy, in accordance with the highest standards of professional conduct.